

# PORT OF SAVANNAH

Garden City Terminal: The Southeast Gateway for the U.S.



July 24, 2018



# GEORGIA PORTS AUTHORITY

## DEEPWATER & INLAND TERMINAL OPTIONS





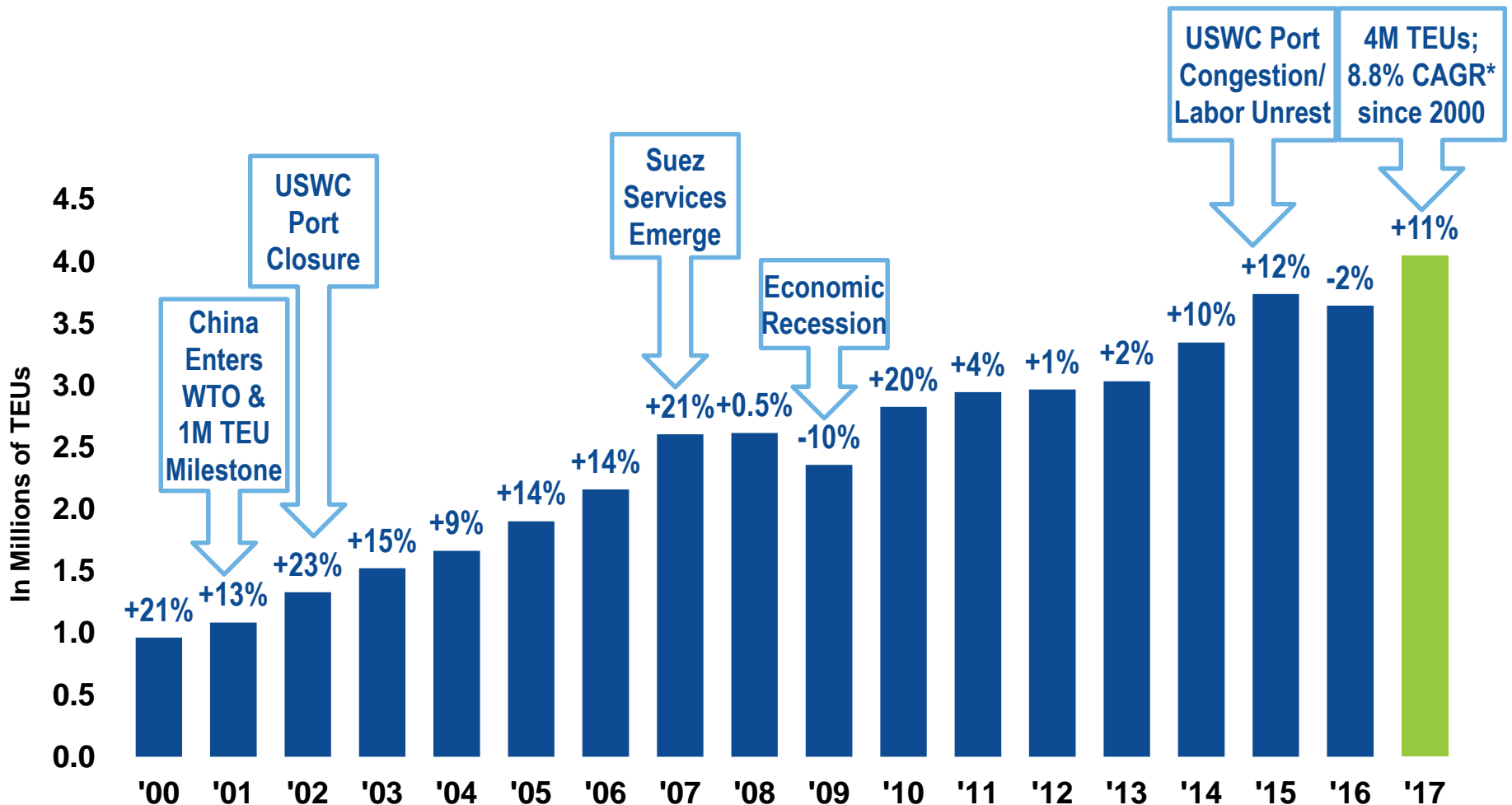


Garden City Terminal is owned and operated by the Georgia Ports Authority • V.Jun-2018

- 9 Container berths
- 9,693 ft (2,955 m) of contiguous berthing space
- 30 Container cranes
- 146 Rubber-tired gantries
- 1,200 acres (485.6 ha) terminal area

# PORT OF SAVANNAH THROUGHPUT

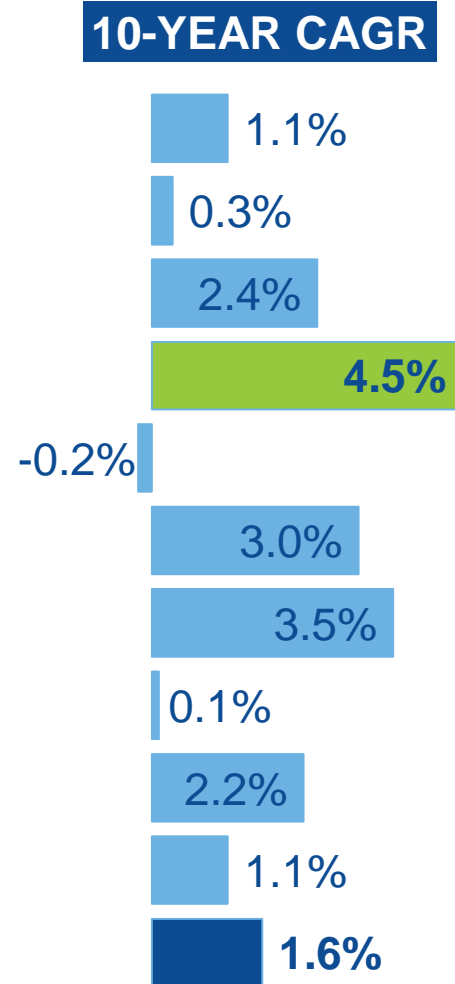
## 18-year Calendar Year History



Source: GPA Marketing (loads & empties);\* CAGR- Compound Annual Growth Rate

# SAVANNAH: #4 AND FASTEST GROWING

PORT	CY2007 TEUs	CY2017 TEUs
1. LOS ANGELES	8,355,039	9,343,191
2. LONG BEACH	7,312,465	7,544,514
3. NY/NJ	5,299,104	6,710,817
<b>4. SAVANNAH</b>	<b>2,604,401</b>	<b>4,046,216</b>
5. SEATAC	3,031,378	2,958,471
6. VIRGINIA	2,111,264	2,841,020
7. HOUSTON	1,744,668	2,459,107
8. OAKLAND	2,386,363	2,420,836
9. CHARLESTON	1,754,381	2,177,557
10. PT. EV	960,860	1,068,335
<b>TOP TEN TOTAL</b>	<b>35,559,922</b>	<b>41,570,064</b>



Source: AAPA; throughput excluding domestic

# SAVANNAH: A GLOBAL COMMERCE HUB



**37 WEEKLY SERVICES  
COVERING THE WORLD**

**THE MOST ON THE  
U.S. EAST COAST**

**EVERY MAJOR CARRIER  
CALLS SAVANNAH**

**Key Savannah Service Features:**

- Offers 10 Services via Panama
- Offers 8 Services via Suez
- First in = 11; Last out = 10 (All Trades)

# U.S. EAST COAST WEEKLY CONTAINER SERVICES

Trade Lanes	SAV	USEC
Asia via Panama	10	12
Asia/India/MidEast via Suez	8	8
North Europe	7	14

Trade Lanes	SAV	USEC
Mediterranean	5	7
Oceania	1	2
Latin America	6	38

	Sav	Pt. Ev	Miami	Jax	Cha	Wilm NC	Nor	Balt	Phil	NY/NJ
Total	37	22	16	9	27	7	29	8	8	35

Source: American Shipper BlueWater Reporting & Carrier Websites July 2018





# FREIGHT MOBILITY

Continued investment in rail infrastructure expansion to support greater inland access for our customers.



## THE CHATHAM ICTF

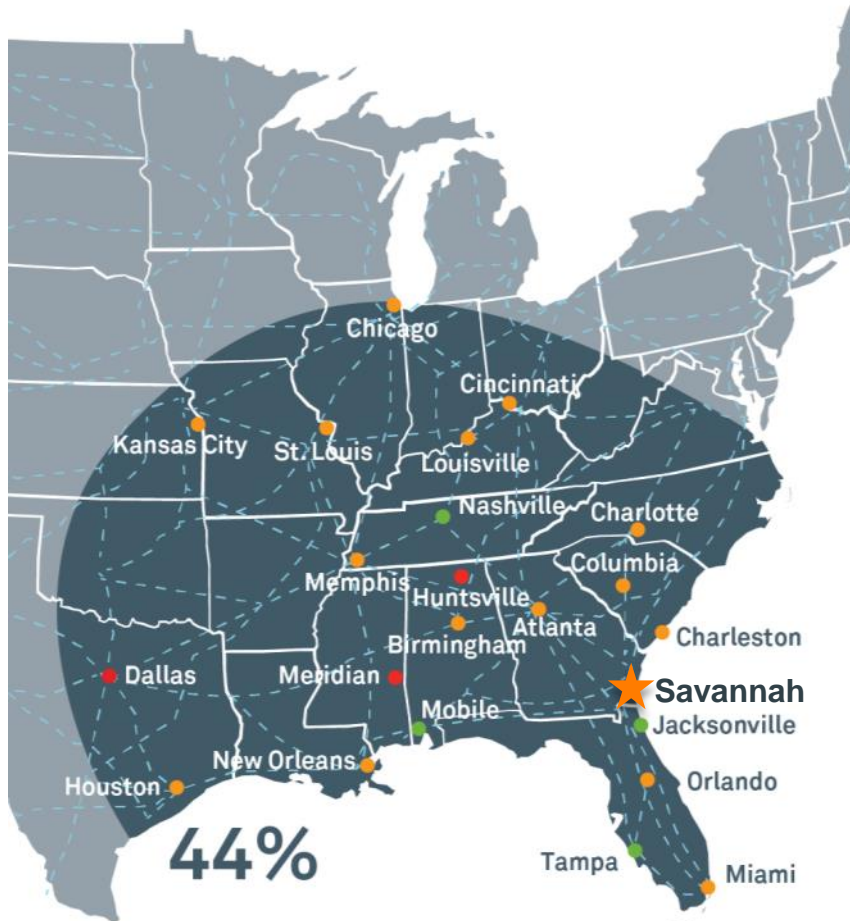
- Served by CSX Transportation
- RTGs
- Working Tracks: (3) 2,100 ft (640 m)
- Total = 6,300 ft (1,920 m)
- Storage Tracks: 11,615 ft (3,540 m)

## THE MASON ICTF

- Served by Norfolk Southern Railroad
- Toplifts
- Working Tracks: (5) 2,800 ft (853 m)
- Total = 14,000 ft (4,267 m)
- Storage Tracks: 8,000 ft (2,438 m)

# UNRIVALED ON-DOCK RAIL CONNECTIVITY

## 18 WEEKLY TRAINS TO KEY MARKET - ATLANTA



- **Daily service** to every major destination east of the Mississippi
- **Fastest East Coast connections** to/from Alabama, Tennessee, Louisiana and Texas
- **Best in class service** to Atlanta

● Served by both Class I's ● Served only by CSX ● Served only by NS

# INTERSTATE ACCESS

Georgia has one of the highest over-the-road container weight allowances among all U.S. Southeast states.

Garden City Terminal to I-16  
(East/West)  
6.0 miles (9.7 km)

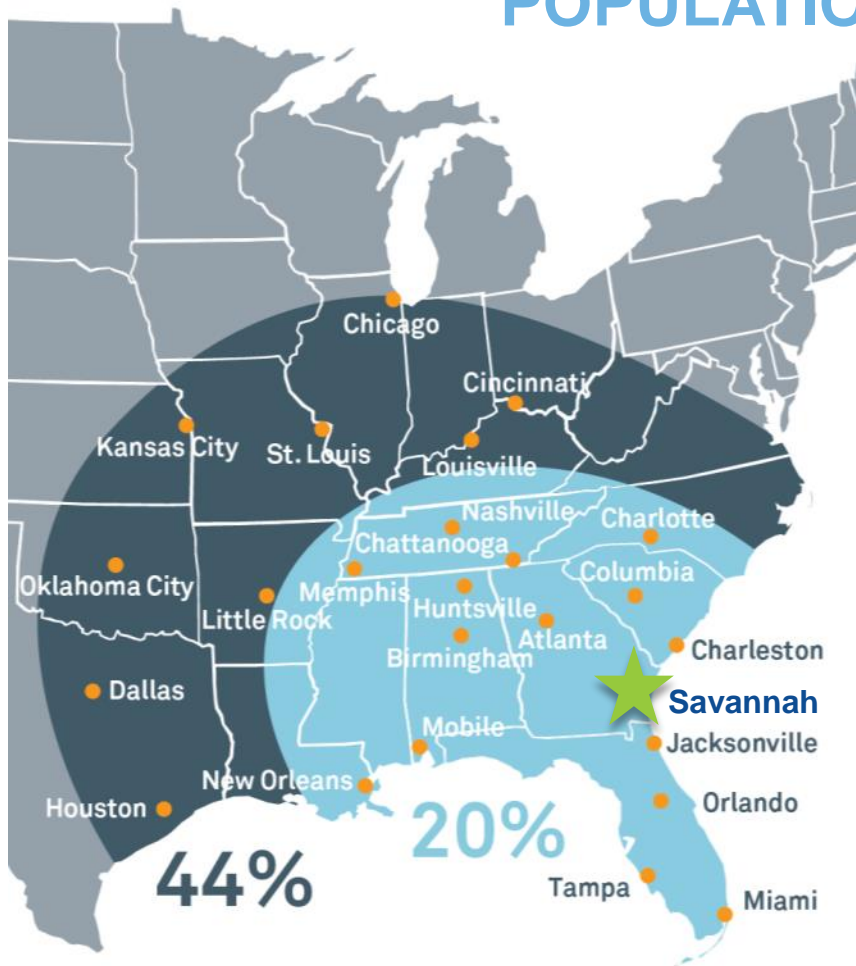


Garden City Terminal to I-95  
(North/South)  
5.8 miles (9.3 km)



# SAVANNAH: GATEWAY TO AMERICAN COMMERCE

POPULATION = CARGO



of the U.S.  
Population and  
Industry is Best  
Served by the  
Port of Savannah

20%

44% Within easy reach of inland  
connectivity infrastructure

# SAVANNAH HARBOR EXPANSION PROJECT

✓ Feasibility Studies

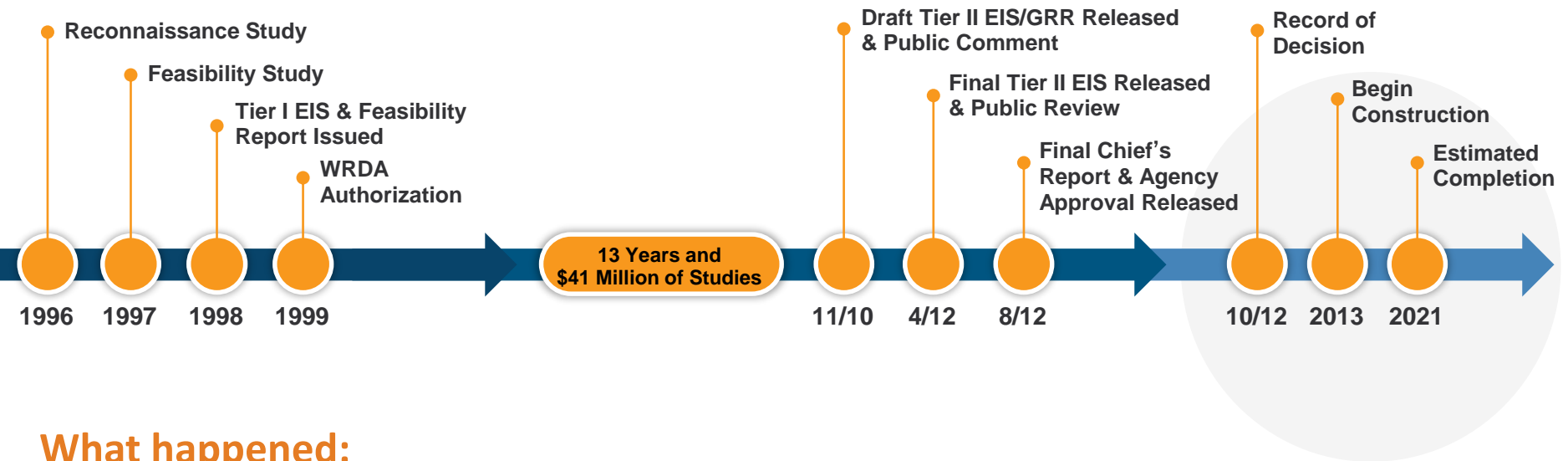
✓ Project Design

✓ **Construction**

□ Completion



# SAVANNAH HARBOR EXPANSION TIMELINE AND CRITICAL PATH DECISIONS



## What happened:

- Project Sponsor chose to follow “Section 203” path to authorization
- Multiple Federal agency objections
- “Contingent” project authorization in 1999
- “Stakeholders Evaluation Group” formed and met over 100 times
- Ultimate approval of 4 Federal agencies achieved
- “Accelerated” Funding needed to get insure timely construction

# Savannah Harbor Expansion Funding Summary - UPDATE



<b><u>Project Cost (2016)</u></b>	<b><u>\$973,000,000</u></b>
Federal Share	\$731,000,000
Local Share	\$242,000,000
<b><u>Project Funding to Date</u></b>	<b><u>\$478,925,400</u></b>
Federal Share	\$177,875,400
Local Share	\$301,050,000
Remaining Benefit to Remaining Cost Ratio (RBRC ratio) - 10.7 to 1	
<b><u>FY18 Capability</u></b>	<b><u>\$84,760,000</u></b>
FY18 Omnibus Funding – passed 3/22/18; signed 3/26/18	\$50,060,000
FY18 Work Plan Funding – <b>released 6/7/18</b>	\$34,700,000
<b><u>FY19 Reported Capability</u></b>	<b><u>\$106,300,000</u></b>
Administration Proposed FY19 Funding	\$ 49,000,000
<i>FY19 Work Plan Funds Needed</i>	<i>\$ 57,300,000</i>
<b><u>Additional Local Funds to be Accelerated</u></b>	<b><u>\$72,476,290</u></b>
Proposed Additional FY18 Funding	\$35,000,000
Proposed Additional FY19 Funding	\$37,476,290

# SHEP UPDATE

ENTRANCE CHANNEL 49 FT (14.9M)  
INNER HARBOR 47FT (14.3M) MLW

WATER  
SUPPLY  
IMPROVEMENT  
99% COMPLETE

OXYGEN  
INJECTION  
88% COMPLETE

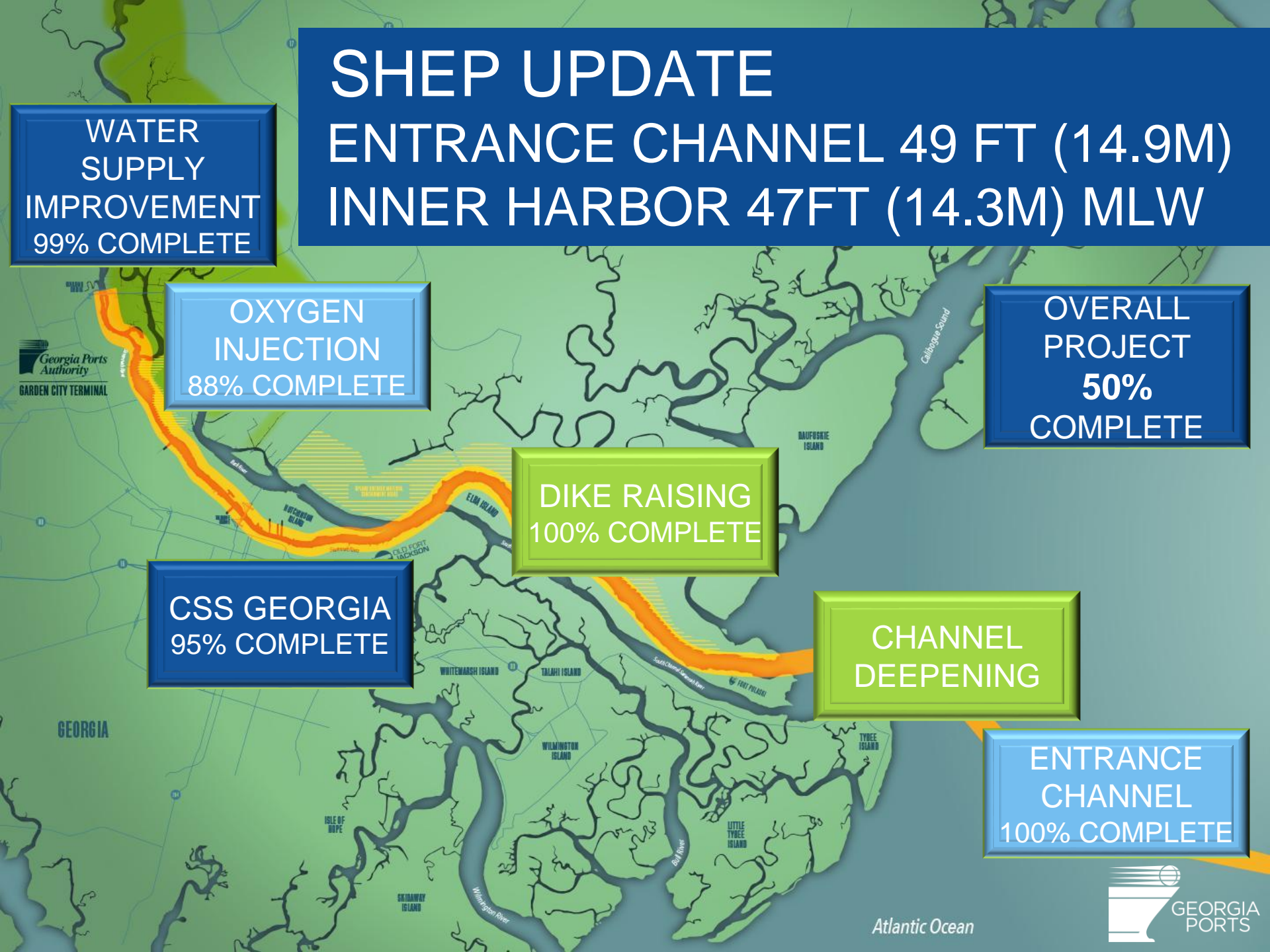
OVERALL  
PROJECT  
50%  
COMPLETE

DIKE RAISING  
100% COMPLETE

CSS GEORGIA  
95% COMPLETE

CHANNEL  
DEEPENING

ENTRANCE  
CHANNEL  
100% COMPLETE



Atlantic Ocean





CAPITAL  
INVESTMENT  
OVER THE **PAST**  
10 YEARS: **\$1 B**

---

CAPITAL  
INVESTMENT  
OVER THE **NEXT**  
10 YEARS: **\$2.5 B**

\$219 M approved for FY19





# INTERMODAL UPDATE

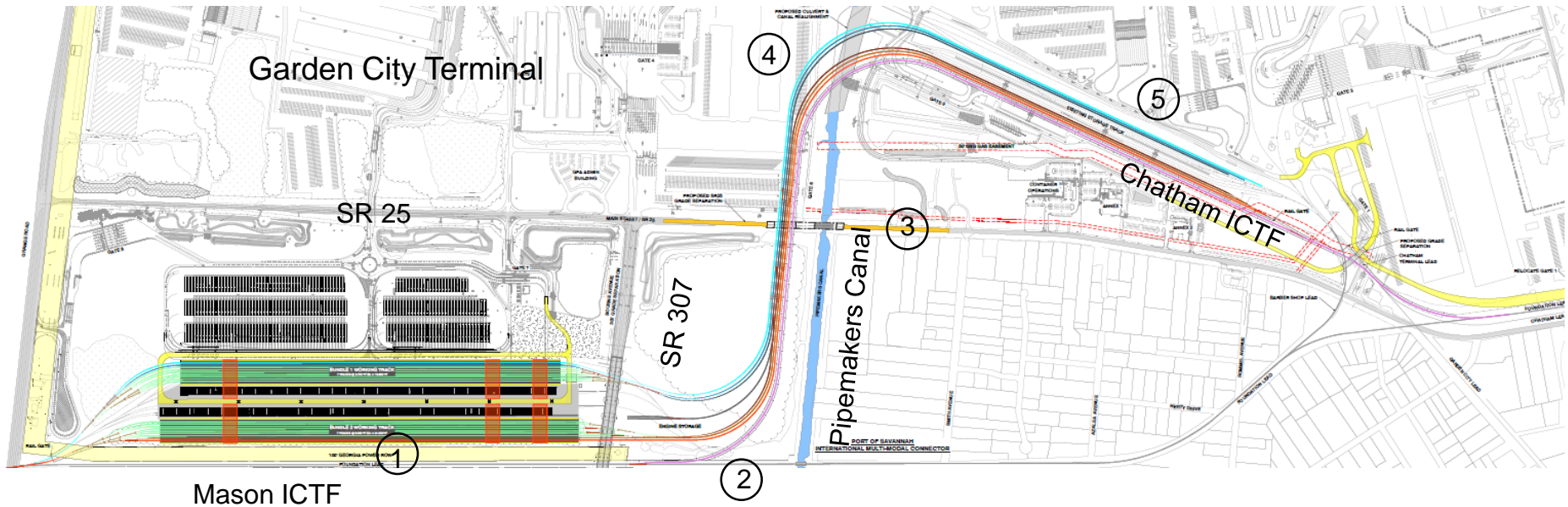
# APPALACHIAN REGIONAL PORT

---

A GPA Intermodal Site in Murray County, Georgia Served by CSX  
Grand Opening August 2018  
Alleviating congestion in Atlanta & stimulating economic development



# Port of Savannah Multimodal Connector Update



- \$128 million project
- \$44 million funded thru Federal Grant (FASTLANE)
- Completion at the end of 2020

- ① Mason ICTF track expansion with RMG equipment
- ② Multi-rail connection between Mason and Chatham
- ③ SR 25 Overpass
- ④ Rail crossings over Pipemakers Canal
- ⑤ Chatham ICTF track expansion



# THANK YOU

---

